



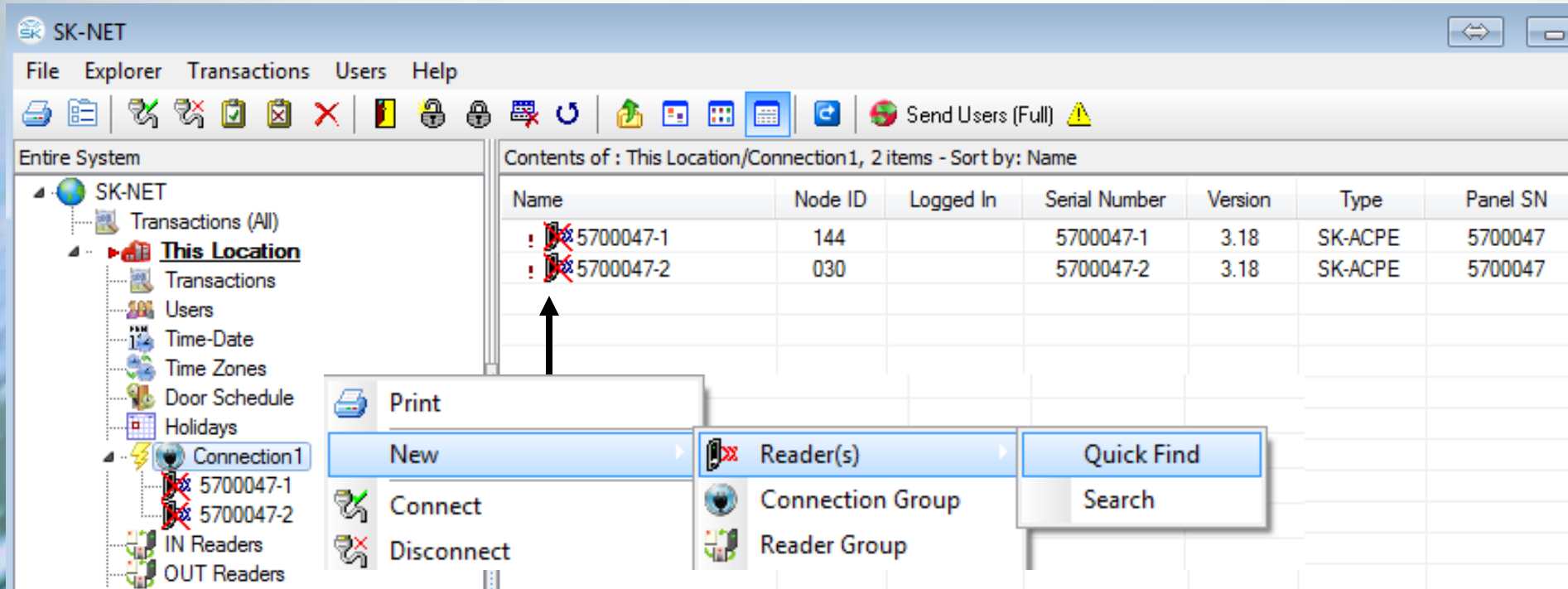
# Securakey™ Access Control

---

Changing a SK-ACP/SK-ACPE or SK-MRCP Control board

# Replacing a Control Panel in SK-NET

After replacing a Control Panel or 28SA+ in your SK-NET system, you will need to reconnect just like you normally do. You will notice that the readers will fail the login shown by the red X's, this is to be expected.



To find the new readers just right click on Connection 1 and select:

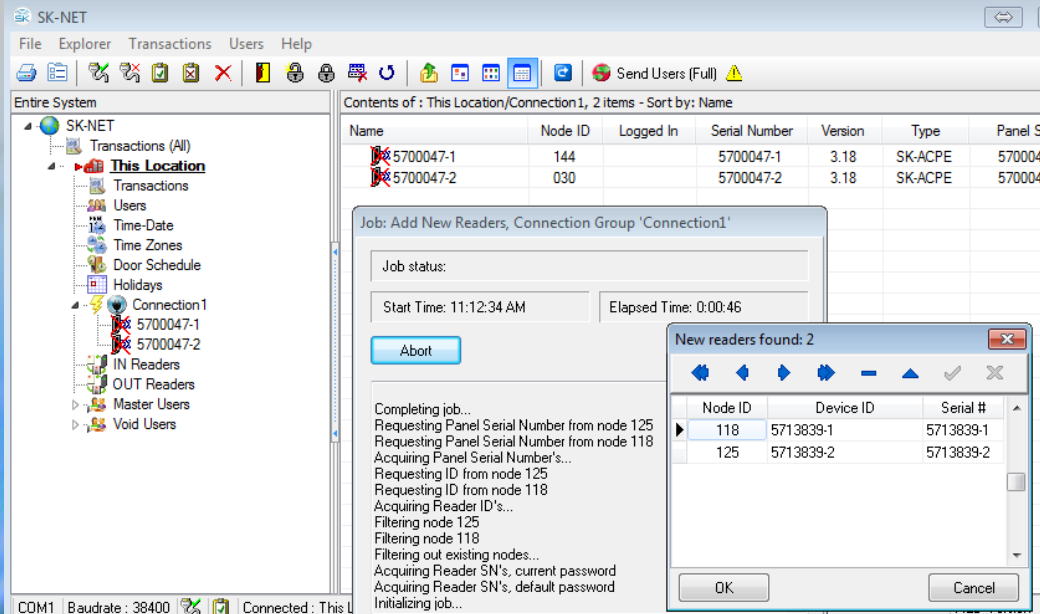
New

Reader(s)

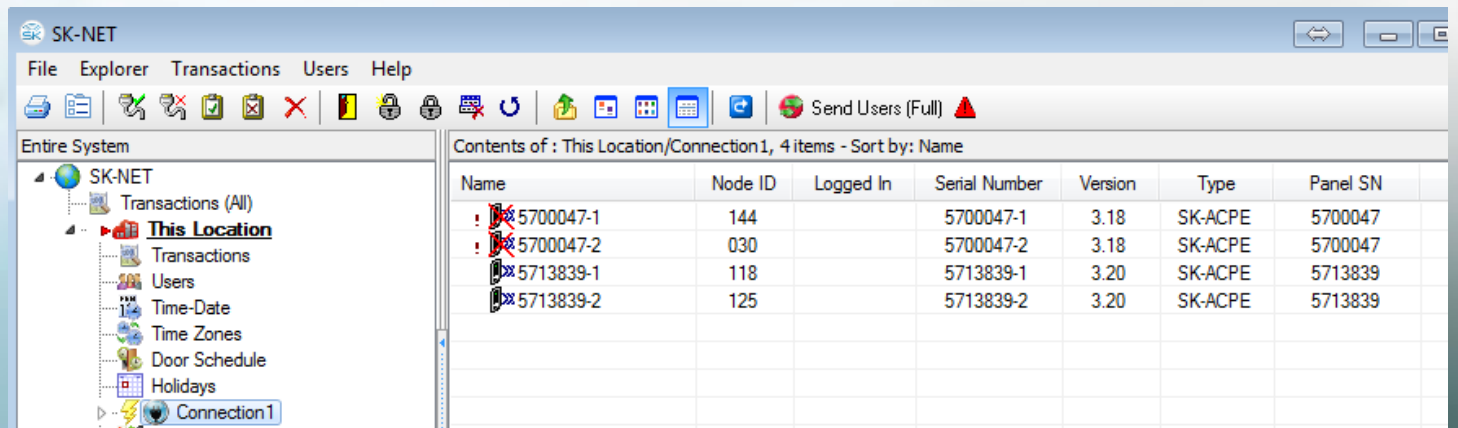
Quick Find, if you have 20 readers or less, Search if you have more than 20 readers

# Cloning the Readers

The new readers have been discovered, now click OK to bring the new Readers into the system. Do not login at this time

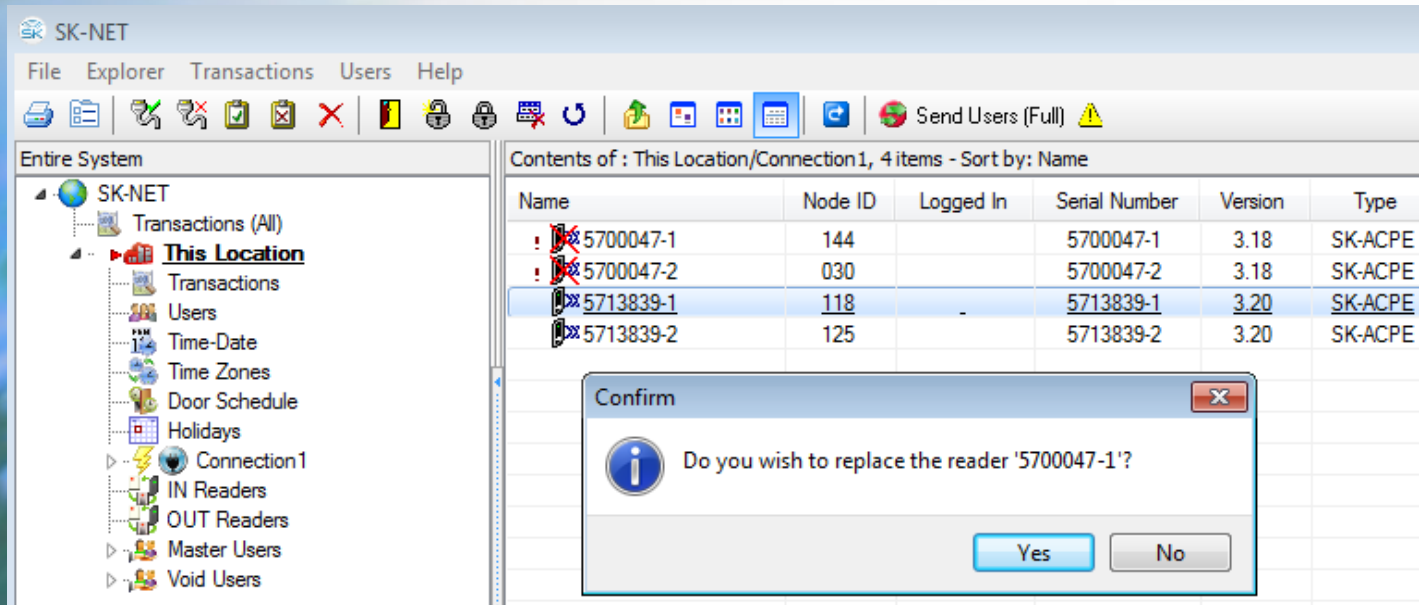


Click on Connection 1 from the tree. On the right side of the screen, you will notice the new readers are listed with their serial numbers.

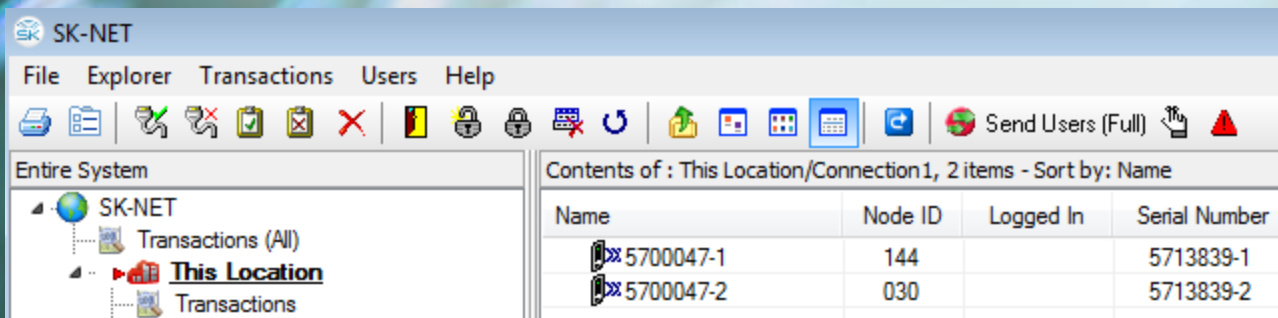


# Drag and Drop the New readers

To complete the Cloning of the old readers, you are going to drag and drop the new -1 reader over the old -1 reader. This will clone all of the original reader settings (time zones, door schedules, inputs, ect) into the new reader. Repeat the same for the -2 readers. If you are using the SK-MRCP/(Nova 16), you could have up to 16 readers to Clone.



After selecting YES, the reader will begin the cloning process, the reader with the red X will disappear and the old reader name now becomes the new readers name.  
Do the same for the second reader



Now just do a 'Send Users Full' and test the system

**Securakey**  ... Thank you for your time

[www.securakey.com](http://www.securakey.com)